



The 49th China International Furniture Fair (Guangzhou) 第49届中国(广州)国际家具博览会



49th

CHINA INTERNATIONAL FURNITURE FAIR (Guangzhou)

第49届中国国家博会 (广州)

2022.3.18-21 / 3.28-31

Canton Fair Complex, PWTC 广交会展馆/保利世贸博览馆

50th

CHINA INTERNATIONAL FURNITURE FAIR (Shanghai)

第50届中国国家博会 (上海)

2022.9.5-8

National Exhibition and Convention (Shanghai) 国家会展中心 (上海)

China Foreign Trade Guangzhou Exhibition Co.,Ltd. 中国对外贸易广州展览有限公司
Floor A, Hall 16, Area C, Canton Fair Complex, No.980 Xingang East Rd., Haizhu District, Guangzhou 广州市海珠区新港东路980号广交会展馆C区16号馆A层
Visitor Consulting / 参观咨询: 020-8912-8034/8074/8078/8061 Exhibitor Consulting / 参展咨询: 020-8912 8076/8039/8025/8019/8024/8168

Home Furniture
民用家具展

2022.3.18-21

Office and Commercial Space
CIFM/interzum guangzhou
办公环境及商用空间展&设备配料展

2022.3.28-31





As China has realized the first centenary goal, people's ever-growing needs for a better life strongly promote consumption upgrade in the furniture&furnishing industry. As one of the "four pillars" of traditional consumption, this industry enjoys great room for upgrading. CIFF(Guangzhou) follows a new pattern of development to meet the new demands and expectations of the industry and companies. Based on the new positioning of "Design Trend, Global Trade, Full Supply Chain, All in CIFF", it fully promotes supply-side structural reforms. Linking both domestic and international markets, Ciff empowers the upgrading of traditional consumption in the home furnishing industry and the building of a new development pattern.

随着第一个百年目标的实现,人民日益增长的美好生活需要有力推动着家居行业消费升级,家居行业作为传统消费的“四大金刚”之一,有极大的升级空间。中国(广州)国际家具博览会立足新发展格局,满足行业和企业的新诉求、新期待,重塑“设计引领、内外循环、全链协同”的新定位,全方位推进展览供给侧结构性改革,链接畅通国内国际两个市场,为促进家居行业传统消费升级、服务构建新发展格局赋能。

CONTENTS

目录

01 Overview

概况:CIFF广州不可不看

The World's Only Furniture & Furnishing Fair Covering the Entire Industry Chain
全球唯一以全题材、全产业链为鲜明特色的大家居博览会 01-33

- CIFF-Home Furniture / 民用家具展 08-19
- CIFF-Office and Commercial Space / 办公环境及商用空间 20-25
- CIFF/interzum guangzhou / 设备配料 26-31
- Cross-Border E-Commerce Zone / 跨境电商专区 32-33

02 Channels

渠道:CIFF广州谁在看

Worldwide Export Channels in 200+ Countries and Regions
背靠200+国家地区,创新开拓外销通路 34-37

- Global Partnership Program / 全球合作伙伴计划 36-37
- Cross-Border E-Commerce Development Program / 跨境电商开发计划

03 Benefits

体验:CIFF广州还能这样看

VIP Reception Program with Exclusive Service
贵宾服务计划,享受专属VIP礼遇 38-39

- VIP Service / VIP礼遇 38-39

04 Highlights

阵容:CIFF广州有多好看

A Luxurious Lineup of Brands with New Products
豪华阵容,大牌云集,顶级新品全线赋能 40-88

- 42 Modern Home 都市家园
- 43 GAINWELL 美盈家具
- 44 M&D|M&D CASA
- 45 Levia, Leyu 利华,利华乐寓
- 46 SENCHUAN 森川家具
- 47 RUDI 如迪
- 48 ARTSYMEN 雅致美
- 49 Sleep Studio 睡工坊
- 50 BIAODIAN 标典
- 51 DHF 东宏家具
- 52 J&C 杰希
- 53 flolenco 佛洛伦克
- 54 JINGCHANG 景昌
- 55 FH&HOME 凤凰美居
- 56 KATIA 卡迪娅
- 57 EASTERN 伊丝顿
- 58 Higold 悍高
- 59 Artie 亚帝
- 60 W Collection 铭度
- 61 livintwist 曜微控股
- 62 COUTURE JARDIN 酷设家居
- 63 SUNON 圣奥
- 64 VICTORY 百利
- 65 UE CHAIRS 永艺
- 66 KAI DI 凯迪
- 67 LINAK 力纳克
- 68 Loctek 乐歌
- 69 QUAMA 冠美
- 70 Jiechang 捷昌
- 71 BEAR ONE 熊一
- 72 GEVANCO 冠臣
- 73 ASIS 思尚
- 74 UBL 优百丽
- 75 Usena 优森纳
- 76 AOBIN 奥彬
- 77 Sitzone 精一
- 78 CENTURY STAR 世纪星
- 79 ACOSMA 幼华
- 80 NANXING 南兴
- 81 KDT 极东
- 82 LIANROU 联柔
- 83 HUAJIAN 华剑
- 84 Taijia 泰佳
- 85 Field jacquard 田野提花
- 86 Kapok 红棉花
- 87 Jusen 炬森
- 88 KEA 祥兴

OVERVIEW

概况：CIFF广州不可不看

The World's Only Furniture & Furnishing Fair Covering the Entire Industry Chain

全球唯一以全题材、全产业链为鲜明特色的大家居博览会

01

ciiff

由中国对外贸易中心集团有限公司主办、中国对外贸易广州展览有限公司承办的中国家博会中国(广州/上海)国际家具博览会创办于1998年,每年3月在广州琶洲、9月在上海虹桥举办,有效辐射珠三角和长三角两大最具活力经济圈,形成春华秋实的发展格局。

中国家博会(广州)是全球规模最大、品质和影响力首屈一指,目前全球唯一以全题材、全产业链为鲜明特色的大家居博览会,覆盖民用家具、饰品家纺、户外家居、办公环境及商用空间、家具生产设备及配件辅料等。

2021年3月,第47届中国国家博会(广州)围绕“设计引领、内外循环、全链协同”新定位,以“促进家居行业传统消费升级、服务构建新发展格局”为主题,展览规模约75万平方米,参展企业近4000家,到会专业观众人数357809,同比增长20.17%,充分发挥全产业链、全渠道资源整合能力,为促进行业和企业后疫情时代高质量发展积极赋能。

Xinhuanet.com: “Exhibitors generally said that the 47th CIFF (Guangzhou) saw high-quality clients with clear demands and great confidence in the market. A high volume of transactions on site gave the industry a strong boost.”

新华网: “参展商普遍反馈本届展会客户质量高、需求明确、对市场很有信心。展会现场成交火爆,给行业打下一剂定心针。”

Hosted by China Foreign Trade Centre (Group) Co., Ltd. and organized by China Foreign Trade Guangzhou Exhibition Co., Ltd, CIFF (Guangzhou/Shanghai), founded in 1998, takes place annually in Pazhou, Guangzhou in March and Hongqiao, Shanghai in September, radiating into the Pearl River Delta and the Yangtze River Delta, the two most dynamic commercial centers in China.

CIFF (Guangzhou) is the world's largest furniture & furnishing fair with the highest quality and influence featuring the entire industry chain and all themes, covering home furniture, homedecor & hometextile, outdoor furniture, office furniture, commercial space and furniture machinery & raw materials.

Guided by the new positioning of “Design Trend, Global Trade, Full supply chain”, under the theme of “promoting the upgrade of traditional consumption in the home furnishing industry and serving the building of a new development pattern”, the 47th CIFF (Guangzhou) with a scale of approximately 750,000 square meters, hosted nearly 4,000 exhibitors and 357,809 professional visitors in March 2021, up 20.17% year on year. It maximized its ability to integrate the resources of the entire industry chain and omni-channel and actively empowered the high-quality development of the industry in the post-pandemic era.



The 49th CIFF (Guangzhou)- Home Furniture will take place on March 18-21, 2022, Office and Commercial Space and CIFM/interzum guangzhou will take place on March 28-31, 2022 at Pazhou, Guangzhou. CIFF sincerely invites you to join the grand event and share new opportunities!

第49届中国国家博会(广州)民用家具展将于2022年3月18-21日,办公环境及商用空间展、设备配料展将于3月28-31日在广州琶洲盛大举办。CIFF诚邀您共襄盛举,共享新机!

750,000^{m²}

Fair Size 展会规模

4,000⁺

Exhibitors 展商数量

350,000⁺

Professional Visitors 专业观众



Fair Positioning / 展会定位

Design Trend 设计引领

CIFF (Guangzhou), driven by innovation and design, gathers leading design brands, premium design displays and authoritative design awards to continuously create new designs, new products, new modes, new formats, new demands and new markets. It injects innovative ideas and original design into the high-quality development of the home furnishing industry.

中国家博会(广州)以创新驱动、设计引领为发展动力,集聚头部设计品牌、高端设计特展、权威设计大奖,不断创造新设计、新产品、新模式、新业态、新需求、新市场,为大家居行业的高质量发展注入创新思想和原创设计的驱动力。

Global Trade 内外循环

CIFF (Guangzhou), with the strength in both domestic and foreign trade as the foundation of development, strives to optimize product categories, enrich exhibition brands, provide targeted B2B matchmaking and integrate online & offline events. This is to promote the supply-side structural reform of the exhibition and empower the home furnishing industry with a strong business function. It helps accelerate the formation of a new development pattern in which domestic circulation is the mainstay and the domestic and international circulations promote each other.

中国家博会(广州)以外贸内销双轮驱动为发展根本,在巩固外贸优势的基础上,围绕优化展区题材、丰富内销品牌、供采精准配对、线上线下融合,全方位推进展览供给侧结构性改革,以强大的商贸功能为大家居行业加快形成以国内大循环为主体、国内国际双循环相互促进的新发展格局积极赋能。

Full Supply Chain 全链协同

CIFF (Guangzhou) is the world's only home furnishing exhibition that represents the entire industry chain. It includes five sectors: Home Furniture, Office and Commercial space, Homedecor & Hometextile, Outdoor & Leisure and CIFM/interzum guangzhou. They not only fully cover the design, manufacturing and consumption ends, but also reinforce and complement each other bringing rich highlights to the industry. Meanwhile, CIFF takes place in March and September as the prime time of global trade fairs, radiating into the Pearl River Delta and the Yangtze River Delta, the two most dynamic commercial centers in China.

中国家博会(广州)是全球唯一以全产业链、全题材为鲜明特色的大家居博览会。民用家具、办公环境及商用空间、饰品家纺、户外家居、设备配料五大展区,不仅以设计端、制造端和消费端的全覆盖,为行业呈现丰富亮点,更进一步相互促进、彼此融合、跨界延伸。同时,中国家博会布局三月与九月两大全球展会黄金时段、珠三角与长三角两大最具活力经济圈,形成春华秋实、双城魅力的发展格局。

Ciff

HOME FURNITURE 民用家具展

2022.03.18-21
Canton Fair Complex/PWTC Expo

时间: 2022年3月18-21日
地点: 广州琶洲广交会展馆、保利世贸博览馆

HIGH-END DESIGN HOME FURNISHING AESTHETICS

高端设计, 家居美学

A New Realm of Quality Homes

— 品质宅家新境界

CIFF-Home Furniture gathers the leading brands and trendy new products in the sectors of home furniture, home-decor&hometextile and outdoor & leisure, covering the themes such as high-end design, suite furniture, whole house customization and upholstered furniture. Homedecor&Hometextile covers the integrated space display, lighting, decorative paintings, artificial flowers and other interior decorations. Outdoor & Leisure focuses on presenting the outdoor home furnishing products such as leisure tables & chairs, gardening decorations and sun-shading equipment, creating a one-stop sourcing platform for professional visitors including global buyers, traders and cross-border e-commerce.

民用家具展云集民用家具、饰品家纺、户外家居等领域龙头品牌和潮流新品, 民用家具展区囊括高端设计、套房家具、全屋定制、软体家具等题材, 饰品家纺涵盖整体空间展示、灯饰、装饰画、仿真花等软装品类, 户外家居题材集中展示休闲桌椅、园艺装饰、遮阳设备等户外家居产品, 为全球采购商、贸易商、跨境电商等专业观众打造一站式选品采购平台。



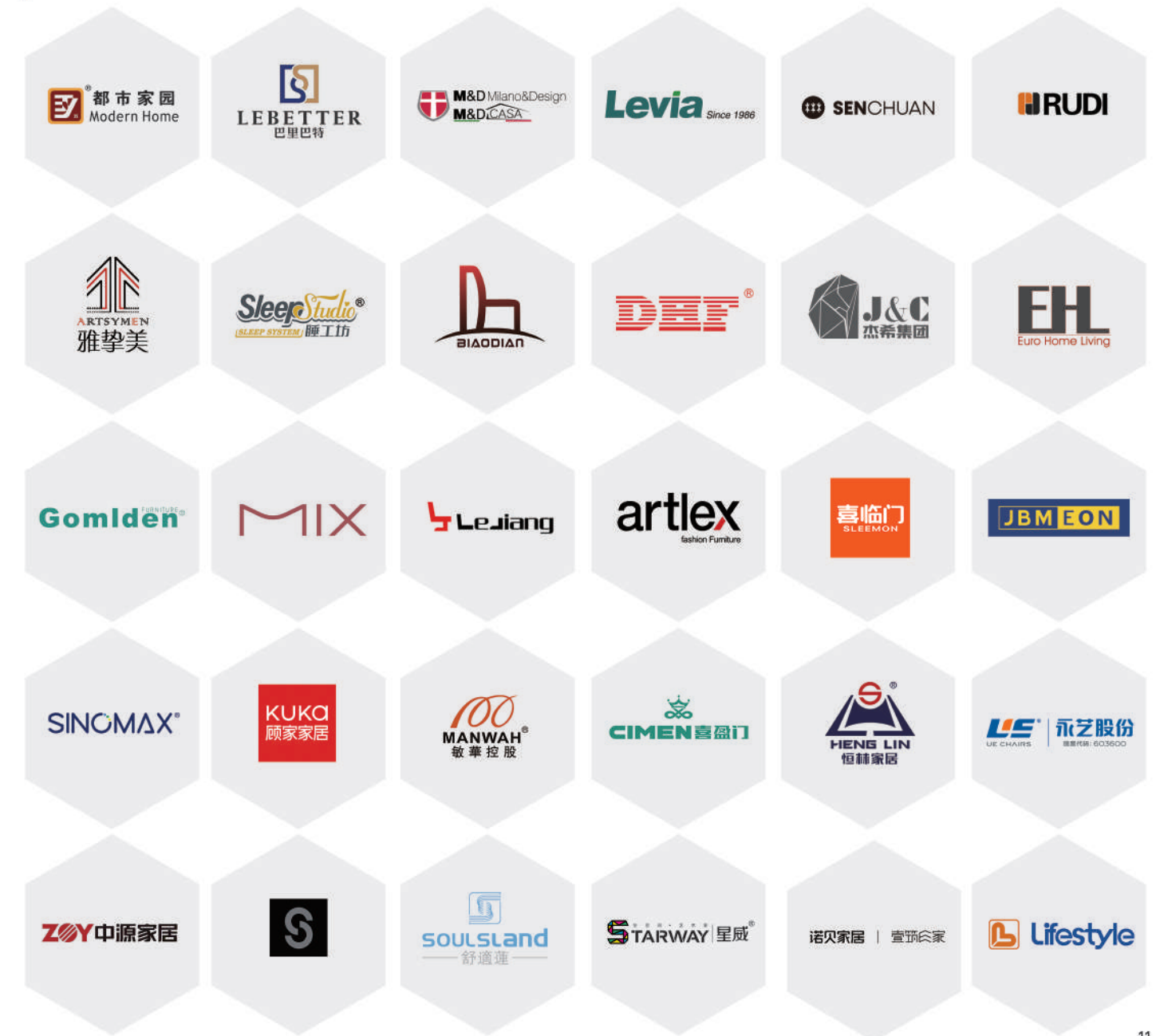
HOME FURNITURE

民用家具展区

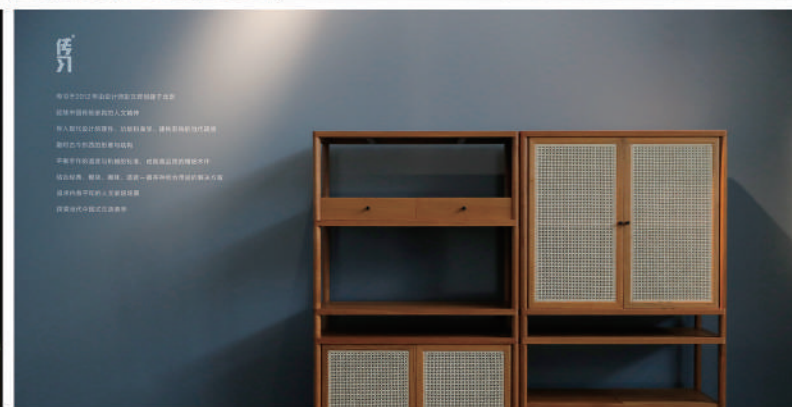
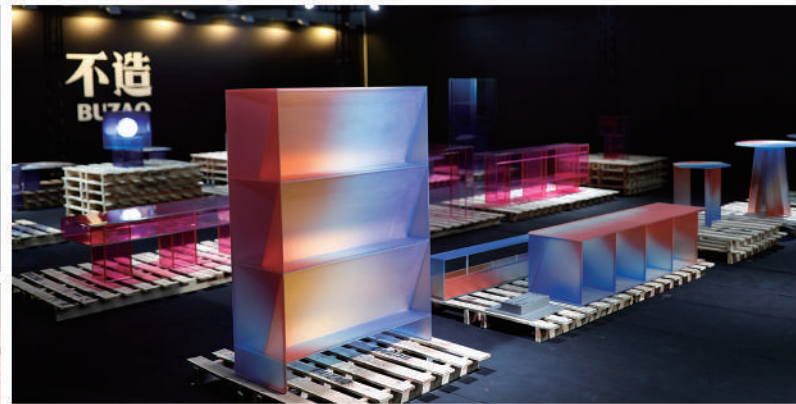
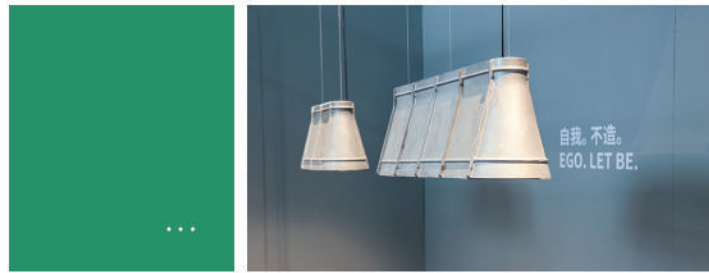


- | | |
|---|--|
| <ul style="list-style-type: none"> ■ Technology & Health (Smart Sleep/Smart Home) 1.1
睡眠生活/科技健康家居馆 ■ Fashion Trend Hall 时尚潮流家居馆 2.1-3.1 ■ International Brands 国际品牌馆 4.1-5.1 ■ Design Spring·Contemporary Chinese Furniture Design Fair 6.1-8.1
设计之春·CIFF当代中国家具设计展 ■ Custom Design 设计定制馆 1.2 ■ Modern Design 现代设计馆 2.2-4.2 ■ Chinese Design & Entry Lux 新国潮文化及原创设计轻奢馆 5.2 | <ul style="list-style-type: none"> ■ Sofa Export 沙发精品馆 9.1-11.1 ■ Sofa Premium 沙发精品馆 10.2-11.2 ■ Sleep Center 睡眠生活馆 9.2 ■ Modern Premium 现代精品馆 12.2-13.2 ■ Dining & Living 餐厅/客厅家具馆 9.3-10.3 ■ Dining & Living, Cross-Border E-Commerce Zone 11.3
餐厅/客厅家具馆、跨境电商专区 |
|---|--|

Brands Preview / 品牌预览 (In Random Order / 排名不分先后)



Design Spring·Contemporary Chinese Furniture Design Fair 设计之春·CIFF当代中国家具设计展



Events / 活动掠影



Design Dream Show
DDS 当代潮流观念展



Designers to Manufacturers Lab
D2M Lab 设计样



CMF Trend Lab
CMF 趋势 LAB



Intelligence Leads Future
China Smart Sleep Expo
智领未来·中国智能睡眠展

HOMEDECOR & HOMETEXTILE

饰品家纺展区



- Home Textile 缤 (家纺布艺) 14.1
- Carpet/ Home Textile 逸 (地毯、家纺布艺) 15.1
- Home Décor Brands 彩 (软装潮流馆) 14.2-15.2
- Lighting 耀 (品牌灯饰) 16.2
- Painting Art 静 (装饰画) 14.3
- Soft Décor 舒 (整体软装馆) 15.3
- Pottery/ Glassware/ Flower & Plants/ Lighting/ China Interiors & Decorations Conference 16.3
雅 (陶瓷、玻璃、花艺绿植、灯饰、中国软装大会)
- Sculpture/Furnishing articles /Gramophone/ Clock/ Fountain/ Frame etc. 14.4
萃 (雕塑、摆件、留声机、时钟、流水、相框等)
- Flower & Plants/ Art Crafts 晶 (花艺绿植、工艺品等) 15.4

Brands Preview/ 品牌预览 (In Random Order/ 排名不分先后)



Events / 活动掠影



Guangzhou:
City & Life · Day & Night
新消费湖玩展

OUTDOOR & LEISURE

户外家居展区



- Outdoor Space Solutions 户外空间定制馆 17.1
- Outdoor Original Design 户外原创设计馆 18.1
- Outdoor New Trend 户外新生活方式馆 17.2
- Outdoor Sunshade & Raw Material & Table Top 阳光生活馆 (遮阳/辅料配件) 18.2
- Garden Decoration/Global Garden Lifestyles Festival/Furniture Design Hall 17.3
户外园艺及文旅民宿配套馆/环球花园生活节/家居设计展

Brands Preview / 品牌预览 (In Random Order / 排名不分先后)



Events / 活动掠影



Global Garden Lifestyles Festival 环球花园生活节



Guangzhou Home Furnishing Design Show “中华寻” 广州家居设计展

Ciff

OFFICE AND COMMERCIAL SPACE

办公环境及商用空间展

2022.03.28-31
Canton Fair Complex

时间：2022年3月28-31日
地点：广州琶洲广交会展馆

INNOVATION ORIGINALITY FORWARD-LOOKING TRENDS

新锐原创，风向前瞻

New Perception of Future Space

—— 未来空间新感知

To better serve China's new development pattern and accurately understand companies' demands, CIFF (Guangzhou) "Office Show" has been upgraded into "Office and Commercial Space Show". While focusing on key areas with competitive advantages including systematic office space, office seating, office accessories, and steel furniture, Office and Commercial Space Show will highlight hot areas such as smart office, medical care for seniors, school furniture, and furniture in various commercial spaces like public space furniture, hotel furniture, aiming to present the most cutting-edge office space solutions and the latest trends in commercial space design for the entire industry.

为更好服务新发展格局，精准把握企业发展诉求，中国家博会（广州）“办公环境展”升级更名为“办公环境及商用空间展”。在深耕系统办公空间、办公坐具、办公配件、钢制家具等重点优势题材的基础上，大力发展智能办公、医疗养老、学校家具等热点题材及公共空间家具、酒店家具等适用各类商用空间的题材，共同为全行业呈现最前沿的办公空间解决方案与最新潮的商用空间设计趋势。



OFFICE AND COMMERCIAL SPACE

办公环境及商用空间展



- Office Space 系统办公空间 1.1-5.1/3.2-4.2
- Medical & Healthcare Furniture 医疗及养老家具 5.1
- Trendy Design 设计潮流馆 5.2
- Education & Training Space/Hotel Project & Interiors Furnishings 教育培训空间/酒店工程及室内软装 1.2
- Public Commercial Space 公共商用空间 2.2
- Office Furniture Component 办公配件馆 6.1-8.1
- Smart Office 智能办公空间 7.1-8.1
- Filing Cabinet & Safe Cabinet 钢制精品馆 12.2
- Comfortable Seating 舒适坐具区 9.2-11.2
- Fashion Seating 时尚坐具区 10.3-11.3
- International Brands 国际品牌馆 9.3

Brands Preview / 品牌预览 (In Random Order / 排名不分先后)



Events / 活动掠影

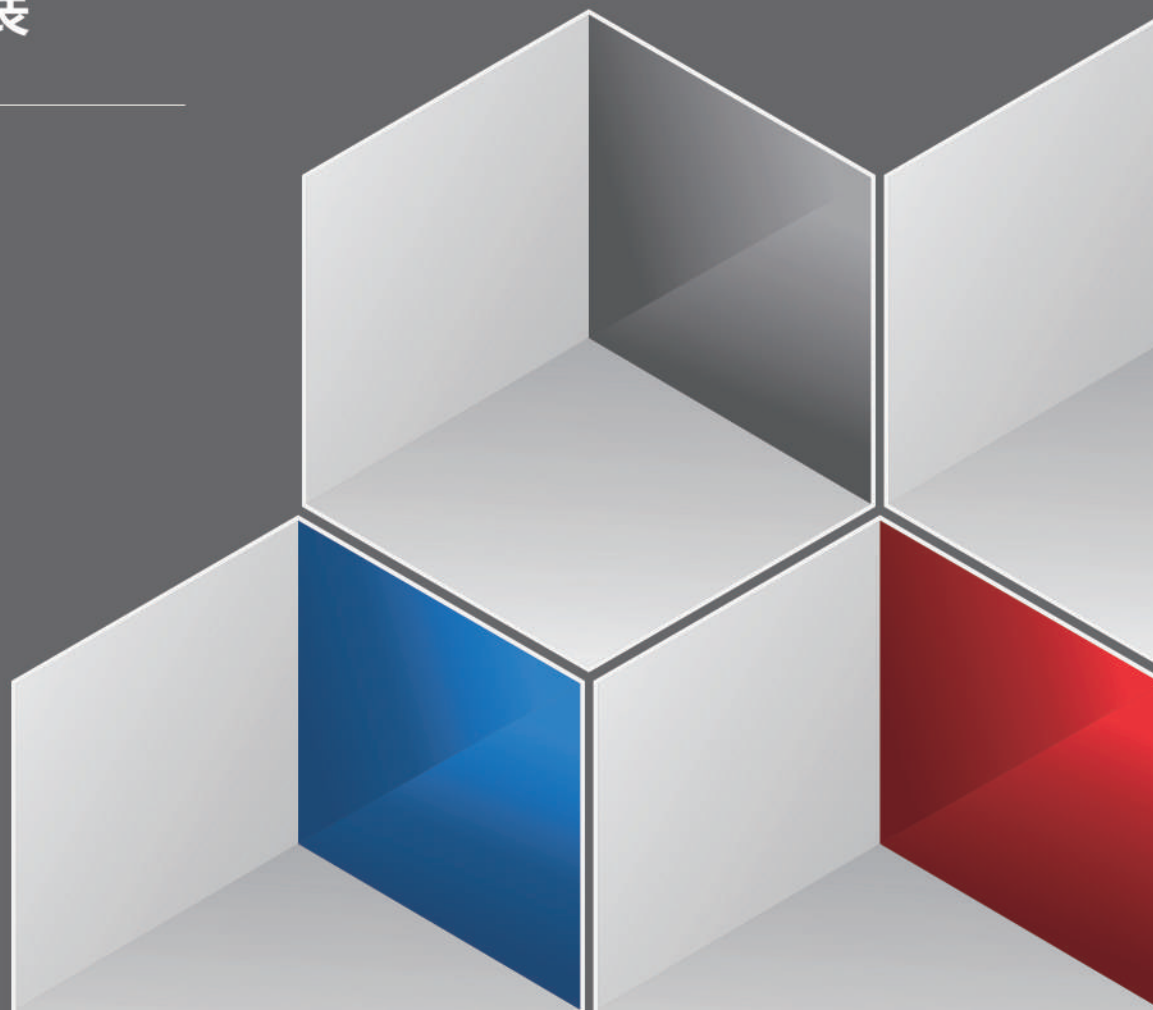


Ciff

CIFM/interzum guangzhou 设备配料展

2022.03.28-31
Canton Fair Complex

时间：2022年3月28-31日
地点：广州琶洲广交会展馆



CUTTING-EDGE TECHNOLOGY INNOVATIVE APPLICATIONS

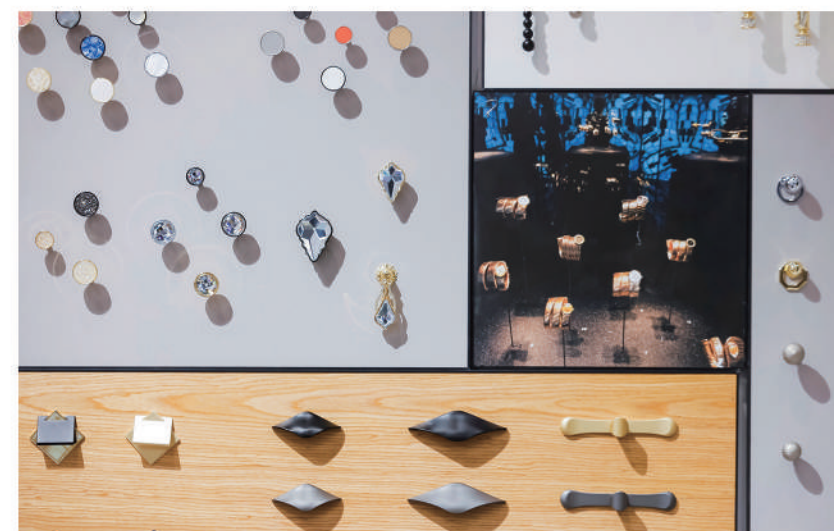
尖端成果，创新应用

New Potential of the Intelligent Manufacturing Industry

— 智造产业新势能

Recognized as the world's top, the biggest and most comprehensive professional flagship exhibition in Asia's furniture manufacturing and raw materials industry, CIFM/interzum guangzhou focuses on new product, new concept, and new technology, covering machinery, equipment, hardware accessories, furniture accessories, and other themes. Top domestic and foreign brands all appear in exhibition. As the top event, CIFM/interzum guangzhou provides new inspirations for intelligent manufacturing and material innovation.

作为业内公认的全球顶尖、亚洲设备配料行业中规模最大、最全面的专业旗舰展会，Ciff 设备配料展集中展示设备配料新产品、新技术、新概念，涵盖机械设备、五金配件和家具辅料等上游题材，国内外顶尖品牌悉数亮相，为智能制造和材质创新两方面提供众多新灵感，以实力铸就顶级盛会。



CIFF/interzum guangzhou

设备配料展



- Woodworking Machinery 木工机械展区 9.1-11.1
- Machinery 综合机械展区 12.1
- Mattress & Sewing Machinery 软体机械展区 13.1
- Mattress Materials & Components 床垫辅料展区 13.2

- International Hall 国际展区 14.1-15.1
- Furniture Materials 家具辅料展区 14.2-16.2
- Hardware 五金配件展区 14.3-16.3/14.4-16.4

Brands Preview / 品牌预览 (In Random Order / 排名不分先后)



Events / 活动掠影

2021 SMART-Outlook for Technologies and Trends in Premium Home Furnishing Decorative Material
 高端家居饰面材料技术及流行趋势展望



Upholstery Intelligent Supporting Industry Innovation Summit
 万物生长
 软体智能配套产业创新力量高峰论坛



Professional Forums in International Zone
 国际展区专业论坛



Customized Furniture Benchmark
 定制家具风向标



Furniture Upstream & Downstream Spring Summit
 家居上下游春季高峰论坛

Coming for Mild Luxury & Minimalism
 —Create the Future Together by Customization
 为轻奢极简而来
 赋能高定,共炬未来



Cross-Border E-Commerce Zone/ 跨境电商专区

10000⁺_{m²}

Zone Size
专区面积

50⁺

Exhibitors
展商数量

By establishing the Cross-Border E-Commerce Zone for cross-border e-commerce experts, CIFF is committed to creating the entire e-commerce industry chain to provide the cross-border e-commerce sector with one-stop services including product & material selection, forums and platform for going global.

In the context of the global pandemic, China's cross-border e-commerce industry has grown against the trend, opening up a new direction for the home furnishing industry to go global. CIFF (Guangzhou) keeps pace with the times and introduces the home furnishing products suitable for export to the cross-border e-commerce friends, covering multiple markets around the world. In 2022, let's look forward to CIFF (Guangzhou) Cross-Border E-Commerce Zone.

跨境电商专区是中国国家博会(广州)为跨境电商达人们打造的选品圣地, CIFF 致力于打造电商全产业链, 为跨境电商提供选品选材、精彩论坛、平台出海等一站式服务。在跨境家居旺季来临之前, 做好准备迎接市场的井喷式增长。

在疫情全球大流行的环境下, 我国的跨境电商行业逆势增长, 为大家居行业出海打开了新的方向。中国家博会(广州)与时俱进, 为广大的跨境电商朋友引入适合跨境出口的家居产品, 涵盖全球多个市场。2022年让我们共同期待中国家博会(广州)-跨境电商专区, 一起跨越国际, 扬帆远航。

Brands Preview / 品牌预览 (In Random Order / 排名不分先后)



Cross-border Home Furnishing Industry Forum
跨境大家居行业论坛

CHANNELS

渠道：CIFF广州谁在看

International Buyers Circle;
Worldwide Export Channels in 200+ Countries and Regions

海购圈：背靠200+国家地区，创新开拓外销通路

02

ciiff

Global Partnership Program

全球合作伙伴计划

Cross-Border E-Commerce Development Program

跨境电商开发计划

International buyers are an indispensable and important part of CIFF (Guangzhou). They are representatives of top purchasing groups, foreign buyers based in China, cross-border sellers and experienced traders backed by more than 200 international markets. They have connected China's surging productivity and the vast global market over 24 years and played a prominent role in the domestic and international circulations.

国际采购商，是 CIFF 中国国家博会（广州）不可或缺的重要组成部分，他们是顶级采购集团的代表，他们是常驻中国的外籍买手，他们是行销全球的跨境卖家，他们是背靠 200 多个国际市场的资深贸易商，二十四年来风雨无阻链接起中国日益澎湃的生产力和广阔汹涌的全球市场，在国内国际双循环中发挥着突出作用。

Under the normal epidemic prevention and control, based on its foreign trade advantages and reputation accumulated over years, CIFF (Guangzhou) is committed to exploiting export channels, improving foreign trade network, enriching the industry chain and promoting the continuous matching between enterprises and overseas buyers through online and offline methods. CIFF uses the key client service system to continuously push corporate brand information to overseas buyers, provides round-the-clock trade matching services free of charge and maintains smooth communication with the international market. CIFF (Guangzhou) has won the trust and support of overseas buyers through diversified activities, supply & demand matching and exclusive services.

疫情防控常态化下，CIFF 中国国家博会（广州）利用多年积累的外贸优势及口碑，肩负起创新开拓外销通路、完善外贸网络及丰富产业链等重担，通过线上及线下手段促进企业与海外采购商的持续对接，展会利用大客户服务系统不间断地为海外采购商推送企业品牌信息、无偿提供全天候的商贸配对服务、保持与国际市场的畅通交流，展会期间通过多元化的活动、供求对接会和尊享礼遇服务赢得海外采购商的信赖和支持。

All in CIFF



Events / 活动现场



Cross-Border E-Commerce Product Selection Conference
家居产业外贸发展论坛

Cross-border E-commerce Product Selection Conference
跨境电商选品大会



Overseas Buyers
海外采购商



Cross-border Big Sellers
跨境大卖团



Overseas Business Online Matching
海外客商线下对接会



Overseas Furniture Buyers
海外家具买家

玩设计 享设计
设计 设计

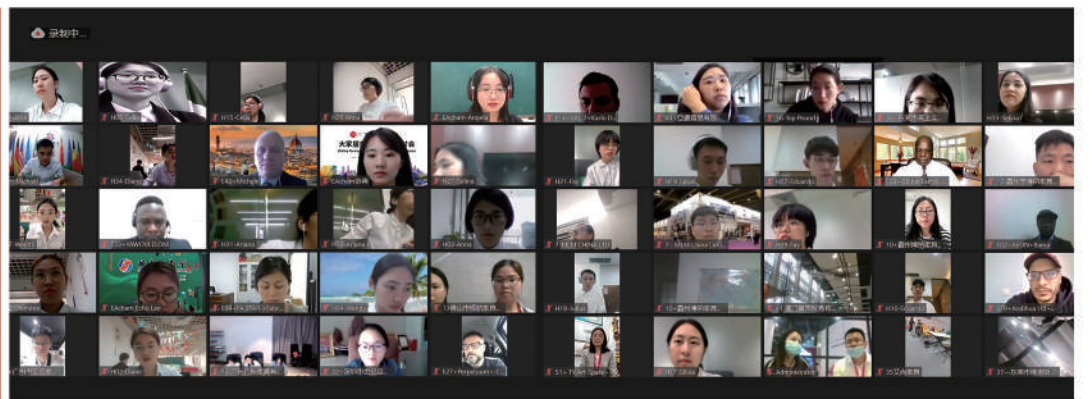
Overseas Furniture Buyers
海外家具买家

Overseas Furniture Buyers
Cross-border E-commerce
Traders
海外家具买家
跨境电商
贸易商



Overseas Business Online Matching
海外大商线上对接会

Overseas Business Online Matching
海外大商线上对接会



BENEFITS

体验：CIFF广州还能这样看

VIP Reception Program with Exclusive Service
贵宾服务计划, 享受专属VIP礼遇

03

ciiff

Membership Services 贵宾服务计划

In order to further upgrade your visiting or sourcing experience CIFF, the organizer has launched a VIP Reception Program. Qualified professional visitors are welcomed to apply for the VVIP card!

为了进一步提升您的观展及采购体验, 主办方推出贵宾服务计划, 欢迎符合条件的专业观众申请大商贵宾卡!

Gift for VVIP 大商贵宾礼遇

Enjoy the long-term Pass and avoid repeated pre-registration

Enjoy the exclusive green path, and access to CIFF (Guangzhou/Shanghai) conveniently

Enjoy the VIP lounge service and business buffet

Enjoy the exclusive customer service and free trade matching service

Enjoy the distinguished reception from exhibitors

Receive the free catalogue, exhibition guide, fashion handbag and new product manual

Participate in various industry forum activities or special exhibitions held during the exhibition free of charge

Take the shuttle bus from the designated hotel to the fairground free of charge

获得长期入场证, 免重复预登记

享受贵宾专属通道, 便捷入场参加 CIFF 中国家博会(广州 / 上海)

享受展会 VIP 休息室服务及商务自助餐

享受专属客服及免费贸易配对服务

享受企业重点接待

免费领取会刊、专属观展攻略、时尚手袋及新品手册

免费参加展会期间举办的各类行业论坛活动 / 特展

免费乘坐指定酒店往来广交会展馆的穿梭巴士

Application Requirements (matching one of the following) 申领条件(满足其中一项即可)

The annual purchase volume exceeds 10 million US dollars

Professional visitors from the global Top 500 or the local industrial Top 100

Big buyers with multinational chain stores

年采购量超过 6000 万人民币

行业排名为世界 500 强或当地行业 100 强的大商客户

连锁店铺数量超过 5 个或展厅面积 2000 平方米以上大经销商



HIGHLIGHTS

阵容：CIFF广州有多好看

A Luxurious Lineup of Brands with New Products

豪华阵容, 大牌云集, 顶级新品全线赋能

04

ciiff





Modern Home

No.17205

Product introduction:

Life and nature give inspiration to the creation of rock slabs, integrate modern science and technology and aesthetic design to the continuous innovation and sublimation of natural materials, with new artistic forms and better performance to build a beautiful space of decorative materials.

No.17205浅烟熏色系列

产品介绍:

生活和自然赋予了岩板创作的灵感,融合现代科技与美学设计赋予自然材料不断的创新和升华,以新的艺术形式及更优质的性能构建美好家具装饰材料。



LEBETTER

Tetris

Product introduction:

The combination sofa in the real sense has full flexibility functions. Various shapes can be combined as you like. There is always a combination that can satisfy you with the multi person sitting mode and the leisure recliner mode. On the basis of flexibility, it can derive more meaning, strengthen the interaction between yourself and your family, no longer play mobile phones and games, but more participate in the space of your residence.

Product style:
Modern

方块

产品介绍:

真正意义上的组合沙发,灵活度功能拉满,各种各样的造型可以自己喜欢的组合,多人的齐坐模式、休闲的躺椅模式,总有一个组合能让你满意。在灵活度的基础上能够衍生出更多的意义,加强自己和家人的互动方式,不再是玩玩手机打打游戏,更多的参与到住所的空间来。

产品风格:
现代



M&D

T029 Sofa style: Modern Italy

Product introduction:

Large modern design, layout easy to customize; Leather with upgraded texture; Milano & design image; Multiple modules, rich combination and wide range adaptability;

Functional advantages:

The overall shape is elegant and concise. The lines of the chassis echo with the metal foot seat. The flower bud locking process of the armrest not only improves the three-dimensional feeling of the sofa, but also shows the quality of leather. The movable back cushion is the finishing touch of this sofa's style. The possible leather selection for this model is really high-end, in it can be found the real luxury.

T029 沙发 风格: 现代意大利

产品介绍:

现代设计大户型, 对开放式布局友好; 质感升级的皮革; MILANO&DESIGN 形象款; 多种模块, 丰富组合, 适配性极强;

功能优势:

整体造型大气简练, 底盘的线条与金属质感的脚座互相呼应, 扶手的花蕾式锁边工艺在提升沙发立体感的同时展示了皮革的质量, 可移动式的靠包更是沙发整体设计的点睛之笔, 出样配置的皮布材质对撞显得高级, 真正意义上轻度的奢侈正在于此。



Levia Since 1986

Levia, Leyu
利华, 利华乐寓

YORK DINING SET

约克餐桌椅套装

Product style:
Modern

产品风格:
现代

Product introduction:
Dining table spec: 1100*700*750mm
Dining Chair spec: 417*456*765mm
Material: Particle Board, PP, Steel tube

产品介绍:
餐桌规格: 1100*700*750MM
餐椅规格: 417*456*765MM
材质: 刨花板, PP, 钢管

Functional advantages:
Easy intall KD version and flat packing, with affordable price.

功能优势:
快速安装结构, 平板包装, 兼具消费者可负担得起的产品价格。

森川家具

森川家具

CLO

Product style:
Contemporary

Product introduction:

CLO is a chair with a metal tube arc. The unique and simple arc is wrapped in comfortable sponge and cloth, which is a perfect fusion of cold and warm. The ingenious bevel angle allows users to have a more comfortable leisure experience. Put it in a corner of the room, it will not be conspicuously overwhelming, but it has a long-lasting and conserved charm for a long time.

CLO

产品风格:
现代简约风

产品介绍:

CLO 是一款有金属管的弧度奠定造型的椅子,独特而简单的弧线,包裹舒适的海绵与布料,是冰冷与温暖的完美融合。巧思而定的斜面角度让使用者有更舒适的休闲体验。将它放在房间一角,不会显眼的喧宾夺主,却在漫长的时间里有一种持久守恒的魅力。



RUDI

如迪

Drow Sofa

Product style:
CONTEMPORARY

Product introduction:

Drow is a well-proportioned sofa design that stands as the epitome of contemporary elegance. The design is stringent and focused, but invitingly open in character: elegant and resolute as a wing-spread stretching out into the air, the sofa spreads out its armrests and invites you into its soft and homely space. Slim, angled legs lift it from the floor in a delicate counterpoint to the generous contours of the back and armrest. In a seemingly effortless flow, the lines of the modules meet and merge into an integrated whole. This sofa can stand in the middle of a room and delight the eye from all angles.

Drow 沙发

产品风格:
现代

产品介绍:

DROW 是一款优雅匀称的现代沙发,设计专注严谨,其特别的款式引人注目,它伸展着宽厚的扶手,邀请你进入柔软的空间,纤细倾斜的脚架与宽大的背部轮廓形成微妙对比,看似毫不费力的线条们相遇融合成为舒适的整体,从任何角度看它都是房间里的亮点。



ARTSYMEN
雅挚美

ARTSYMEN

Motion recliner sectionary sofa

Product style:
Morden

Product introduction:
PU+METAL

Concept:
To design a special model and comforable chair which is outstanding from the normal design.

餐椅

产品风格:
现代

产品介绍:
PU+ 金属

设计理念:
从设计, 舒适感上取胜, 区别于其他普通家用餐椅。



Sleep Studio

Trundle Sofa

Product style:
Modern simplicity

Product introduction:
Small family dual-purpose sofa, The bottom box can be pull out being a bed ,the chaise can exchange directions according to the needs .

Functional advantages:
The independent spring seat cution ,feel the comfort of being hugged .

SF949D拖床

产品风格:
现代简约风

产品介绍:
小户型两用沙发, 底箱拖拉可变床, 贵妃位可根据客户所需互换位置。

产品优势:
独立弹簧座包, 感受被拥抱的舒适。



BIAODIAN/标典

Leaf Chair

Product introduction:

The back and seat of the Leaf Chair are very similar to the two fallen leaves falling slowly from the trees in autumn, that is how it got named. This chair is wider than the usual chair so that the back can be surrounded by people in a larger radian, giving a more thoughtful sense of security. Similarly, the two sides of the seat surface are slightly raised, which corresponds to the bending of the back. In this way, users can be more relax and take their feet off the ground, cross their legs, sit into the seat, surrounded by the back firmly, and enjoy the comfort and meditative atmosphere that given by the chair. The back of the chair has two choices: upholstered and wooden surface.

落叶椅

产品介绍:

落叶椅的靠背和坐面像秋天从树上缓缓落下的两片落叶, 故而得名。落叶椅比平常的椅子要宽, 使得靠背可以以更大的弧度将人包围, 给予更周到的安全感。同样, 坐面的两边也微微翘起, 与靠背的弯曲形成呼应, 以这种形态诱导着使用者可以放松地双脚离地, 盘腿窝进座椅深处, 身后由靠背坚实地环绕, 享受椅子带来的舒适和安心。椅子的靠背有海绵布面和木面两种选择。



DHF / 东宏

Pongo

Product style:
Modern Nordic wind

Product introduction:

1. Original design from Italy;
2. Comfortable, ergonomically designed;
3. 100% imported virgin fresh PP material with UV protection;
4. Stackable - space saving in container;
5. Variety colors for your choices;
6. Suitable for indoor and outdoor.

Pongo

产品风格:
现代北欧轻奢风

产品介绍:

1. 产品采用进口 PP 原材料生产;
2. 原创设计, 聘请意大利设计师设计, 设计独特, 产品颜色多样新颖, 国内外有专利
3. 人体工程学设计, 坐上去舒服;
4. 有国际认证质量检测报告;
5. 产品可堆叠, 省体积;



J&C

JA7226-LGC

Product style:
Modern Jane Europe

Product introduction:

Functional dining table: stretched on both sides, western and western gray green tiles + black painted tempered glass, center pillar MDF black matte paint, chassis black sand grain baking paint, IPCS/3CTN.

Functional advantages:

Selected rock slabs, resistant to high temperature and abrasion; tensile function design on both sides, practical and advanced.

JA7226-LGC

产品风格:
现代简欧

产品介绍:

功能餐台:两边拉伸,西西灰绿瓷砖+黑色油漆钢化玻璃,中柱MDF黑色哑光漆,底盘黑色砂纹烤漆,1PCS/3CTN。

功能优势:

精选岩板,耐高温耐磨;两边拉伸功能设计,实用高级。



FLOLENCO
佛洛伦克

flolenco

Hand drawn people bottle
手绘人瓶

Product style: Modern minimalism

产品风格:现代、极简

Product introduction:

Hand-painted human bottle pure hand-painted ceramic flowerware;

产品介绍:

手绘人瓶纯手工绘画陶瓷花器;

Concept:

Abstraction and simplicity collide. The winding hand-curved figures highlight the artistic atmosphere and interpret the minimalist art of the current era.

设计理念:

抽象与简约相互碰撞。蜿蜒的手工弧线人物凸显艺术气息,诠释当下时代的极简艺术。



JINGCHANG

Ceramic table lamp 陶瓷台灯

Product style:

Exquisite workmanship, in line with aesthetics, quite texture

产品风格:

做工精致,符合美学,颇具质感

Product introduction:

Exquisite ceramic body, aesthetic modeling, hand-carved patterns, wooden base, all these are the table lamp in addition to the use value, very ornamental value.

产品介绍:

精致陶瓷胚体,美学造型,手工雕刻图案,木质底座,这一切是的本款台灯除了使用价值外,极具观赏价值。

Concept:

Modern aesthetics into the traditional blue and white porcelain manufacturing process, the combination of Chinese and Western ornamental concepts, to provide guests with a good aesthetic experience.

设计理念:

把现代美学融入到传统的青花瓷器制造工艺中,中西观赏理念相结合,给客人提供良好的美感体验。



凤凰美居
FH&HOME

FH&HOME

Afanna series

雅梵娜系列

Product style:

Chinese-French Style

产品风格:

中法式

Product introduction:

English Product Description: Afanna series of vitality bring from the waters transparency to all life. Whether it is the woods or small moss, crowned by sunlight, The air shining, brightly and sprinkled in Listen carefully, this is Afanna singing for all things.

产品介绍:

产品介绍: 生机,从鸟欧牟的众水而来,为一切生命带来透亮。无论是参天巨木还是小小青苔,以阳光为冠冕,将空气中的每一分闪耀晶莹撒满绿意。仔细听,这是雅梵娜正在为万物吟唱。



卡迪娅

KATIA

Charters

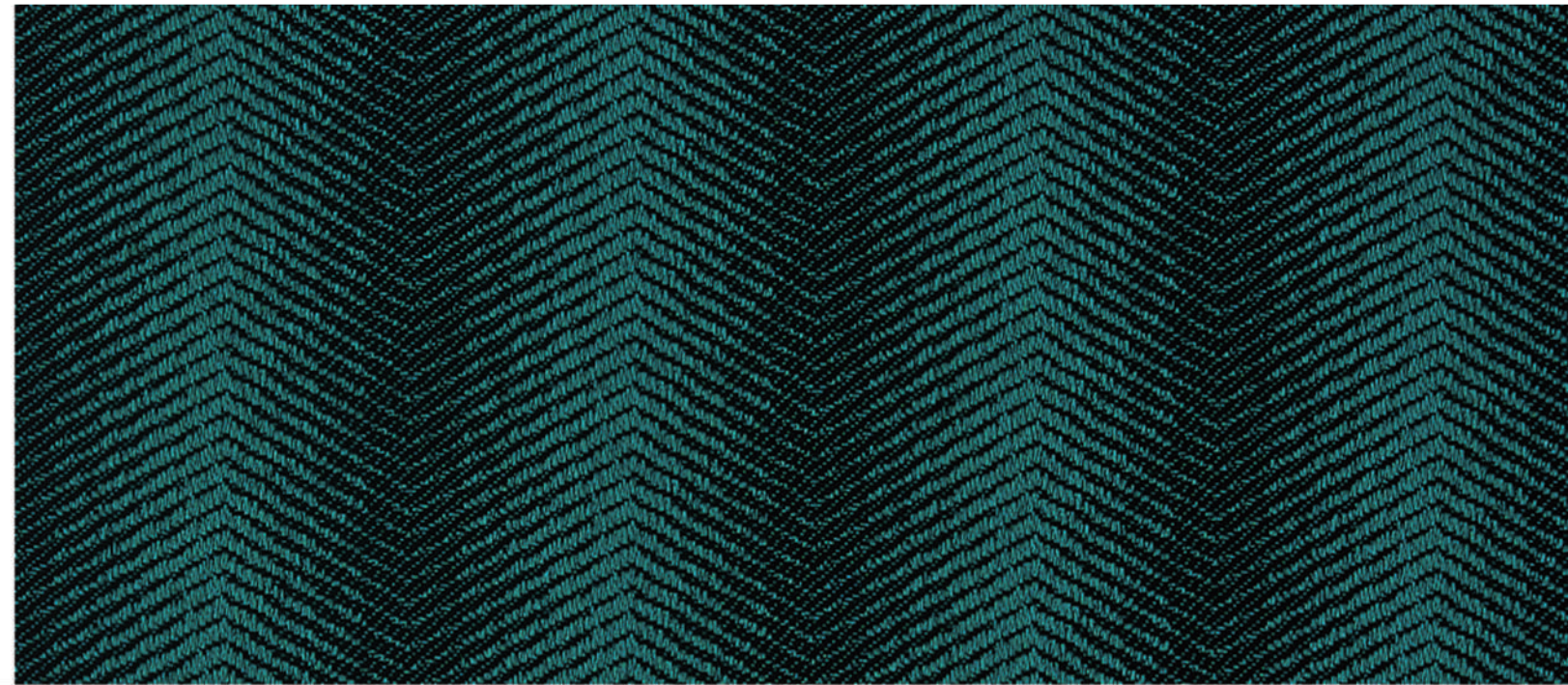
Product style:
Italy light luxury, modern simplicity

Product introduction:
Traditional Chinese ceramic craftsmanship, with a warm and delicate texture, painted by hand. Fashionable and stylish creative modeling, abstract geometric stripes, not only showing cuteness, but also full of artistic taste. The craftsmanship is polished, and every detail is poured into the craftsman's devotion to handcraft art, so that you can relax in the space and experience the ordinary and simple happiness.

Chartres沙特尔猫-手绘黑线

产品风格:
北欧风

产品介绍:
中国传统陶瓷工艺, 质感温润, 细腻。时尚有格调的创意造型, 抽象的几何条纹, 既显萌趣, 又极富艺术品位。纯手工绘制, 匠心打磨, 每一个细节都浇灌匠人对手工艺术的虔诚, 让你在空间中可以闲下来, 体会平凡简单的快乐。



EASTERN/伊丝顿

Upholstory fabric,Outdoor fabric

沙发面料, 户外面料

Product style:
Modern

产品风格:
中法式

Product introduction:
We mainly do sofa fabrics and sell to top 10 biggest wholesales in US and Europe. our outdoor fabric can be competitive with Sunbrella, the lightfastness can be reached 1000 hours in grade 4.

产品介绍:
沙发面料, 主要出口欧美前 10 位的销售商。户外面料主要对标美国的 SUNBRELLA, 光照可以达到 1000 个小时 4 级。

悍高 HIGOLD®

Higold

Lisboa

Product introduction:

Pierrick Taillard, as an experienced designer in France, is a respected follower of Salvador Dali, and he take this method into his master piece Lisboa. Generous in its proportions, comfortable and airy, based on a solid and elegant aluminum frame foundation, a color rope belt is emerged. This nest hand woven by the best craftsmen will impress you with its softness. It is an armchair invites you to the Mediterranean relaxation. Under the shade of tropical trees, lie down quietly, smell the perfumes and let the birds sing. Set on a soft and supple nest, Like a caress, let the voluptuousness of its curves welcome you into its heart to transport you to your sweetest dreams, and enjoy the sweetness of a Mediterranean siesta and eat life to the fullest.

利思博雅

产品介绍:

作为一名经验丰富的法国设计师,皮耶里克·泰拉德是萨尔瓦多·达利的忠实追随者,他把这种方法融入到他的作品《利思博雅》中。慷慨的比例,舒适和通风,基于一个坚实的和优雅的铝框架基础,一个彩色绳带穿梭其中。技艺精湛的编织工匠把这份柔软曲线呈现,一个邀请您体验地中海式放松的扶手沙发应运而生。



Artie 亚帝

Artie

Bari single swing

Product style:

Modern, simple, fresh

Product introduction:

Bari single swing combining the commonalities between nature and the city, starting from the independent space and leisure needs of modern life, the simple V-shaped weaving method and the pure white frame are used to create a fresh and comfortable style, which is suitable for balconies, courtyards, gardens and other scenes. The triangular design of the aluminum rod frame on both sides ensures the stability of the frame. Being in it, swaying freely, your thoughts and inspiration flow along with it, and you will get a glimpse of happiness.

芭瑞单人秋千

产品风格:

现代、简洁、清新

产品介绍:

BARI SINGLE SWING 糅合了自然与都市的共性,从现代生活的独立空间与休闲性需求出发,运用简洁的V字编法搭配纯白色框架营造出清新舒适的格调,适用在阳台、庭院、花园等多个场景。两侧的铝杆框架的三角形设计,保证了框架的稳定性。置身其中,自由摇荡,思绪与灵感随之流动,一隅清欢皆从此得。

W collection

W Collection

Amelia

Concept:

The open platform frame creates a sense of lightness, while the extra-thick cushions provide solidity and transcendent comfort.

Product introduction:

The frame is made of aluminum, and its striking aluminum-drawn mesh back subtly connects to the soft arms, with geometric contours in a harmonious proportion. The open platform frame creates a sense of lightness, while the extra-thick cushions provide solidity and transcendent comfort.

Amelia

设计理念:

开放式平台框架带来轻盈感, 而超厚的座垫则提供了坚固性和超凡的舒适感。

产品介绍:

该框架采用铝材料制成, 其醒目的铝拉伸网后背巧妙衔接到柔和的手臂中, 几何轮廓比例和谐。开放式平台框架带来轻盈感, 而超厚的座垫则提供了坚固性和超凡的舒适感。



livintwist

FULL OF WONDER

livintwist

Flo Day Bed

Product style:
Modern simple

Product introduction:

"FLO" means "flower" in The Italian language, which is why the famous Italian architect "Claudio" gave this name to this series. He hopes to perfectly and fully integrate the elements of nature into the design and details of this series, and display the colors and creativity of nature vividly in the series.

Flo 大床

产品风格:
现代简约

产品介绍:

"FLO" 是意大利语言里是“花朵”的意思, 这个也就是意大利著名建筑师“克劳迪奥”为什么把这个名字赋予了系列。他希望把大自然的元素完美和充分的融入到这个系列的设计和细节里, 把大自然的颜色和创意在系列里表现得淋漓尽致。

COUTURE® 酷告 Sardinia 设计

COUTURE JARDIN

CRUISE

Product style:
modern/European style

Product introduction:

CRUISE Collection As soon as you approach it CRUISE lets your imagination run wild! Daydreams are never faraway, whether you lounge, sleep, snack or play games with your loved ones. Intended for residential, commercial and hospitality use, enjoy your sailing...

一帆风顺

设计风格:
现代, 北欧

产品介绍:

结合了奥地利顶级 HPL 户外板, 户外织带, 顶级户外防水酷布, SPRADLINE 皮料等多种新型材料, 外观形似游艇, 时尚大方, 内部功能多样, 是大型 PARTY 中最引人注目的配置, 能同时容纳十多个人狂欢。如果把中间桌板降下来, 瞬间变成超级大床; 座位及甲板下有超大的收纳空间, 船头处还配有冰桶等户外派对必备功能。



Sunon 圣奥

sunon

ATLAS

Product introduction:

Created by the leading German design team of Form and Branch, the appearance, materials, and techniques that Atlas embodies together demonstrate its exceptional attention to detail and quality. As a flagship masterpiece, it's set to bring you a future-facing and intelligent working experience.

Functional advantages:

Atlas chooses North American walnut together with a 3D wire drawing technique to create stereoscopic and complete wood grains, and to ensure a pleasingly fine touch under your fingertips.

昂蒂娜

产品介绍:

德国首席设计团队 FORM AND BRANCH 原创, 以旗舰国际的艺术理念, 将人文美学、健康办公与未来科技相融, 打造高端健康的智慧商务空间。遵循健康办公理念, 通过内置 3D 手势传感模块, 实现了 750MM-1140MM 无接触式手势传感升降功能, 同时首次将数显科技用在办公家具上, 实现高度可视化智慧办公体验。

功能优势:

遵循健康办公理念, 通过内置 3D 手势传感模块, 实现了 750MM-1140MM 无接触式手势传感升降功能, 同时突破工艺难点, 首次将数显科技用在办公家具上, 实现高度可视化智慧办公体验。

VICTORY 百利

Dynamic Space

VICTORY

FIT2.0 Intelligent Lifting System

Product style:
Modern

Product introduction:
Free up and down, my dynamic I grasp ;

Functional advantages:
FIT2.0 lifting table, powerful new motor Between sitting and standing Different office postures do not hinder switching It also provides a smooth, insensitive and quiet extreme experience Adjust the height of the whole digital indication Can accurately know the current height .

FIT2.0办公智能升降工作系统

设计风格:
现代

产品介绍:
自由升降,我的动态我把握 ;

功能优势:
FIT2.0, 新型电动力强大, 在坐姿和站立之间不同高度的办公姿势无碍切换也可带来平稳、无感且安静的极致体验。调节高度精确数字指示, 数字化展示, 通俗易懂。



UE CHAIRS

Motion recliner sectionary sofa

Product style:
Modern

Product introduction:
Big seat style 2 layers arm Piping Comfortable cover and seat feeling;

Functional advantages:
Motion left recliner function , can be lying ;

功能转角组合沙发

产品风格:
现代

产品介绍:
款式大气双扶手设计滚条设计面料和坐感舒适;

功能优势:
左边位是功能单位, 可躺倒贵妃可躺倒;



Smart office

Product introduction:

Kaidi intelligent office division as the world's leading intelligent office furniture system supplier, after years of development, brings together the industry high quality development and design capabilities, professional and efficient production lines, after-sales service system, globalization has product development, electronic/software development, engineering design, laboratory testing, global project management ability, according to the needs of customers, from raw materials to finished products, after thousands of working procedure, through the multiple quality control and test, minimize defective products, to provide customers with high quality and reliable products, which is famous in the world.

快速升降办公桌

凯迪智能办公事业部作为全球知名智能办公家具系统提供商,经过多年的发展,汇集了行业内优质的开发设计能力,专业高效的生产流水线,全球化的售后服务体系,已具备产品研发、电子/软件开发、工程设计、实验室测试、全球项目管理能力,根据客户的需求,从原材料到最终成品,历经上千道工序,通过多重质量把控和多项测试。



KAIDI



LINAK / 力纳克

LINAK DPG Controls

Product introduction:

DPG with reminder DPG consists of DPGIM, DPGIB and DPGIC Desk Panel models. All DPG models are activated by tilting; an easy intuitive way to adjust a desk without any attention needed. With the DPG, you get up to four memory positions which are reached by simply tilting the panel until the desk stops at the stored position. The colour indicates to the user to change position. The integrated reminder function of the three DPG Desk Panel models is visualised by a light. Its colour reflects the current usage status of the desk. A colour change of the light reminds the user when it is time to change position. The reminder function thus naturally supports the user to achieve a healthy posture variation throughout the day. Compatible with the Desk Control™ app. DPG Desk Panel models with a reminder function are compatible with the Desk Control app, using the integrated Bluetooth® wireless technology. The app allows the user to keep track of his personal desk usage statistics on a smart device and get notifications when to stand.

力纳克 DPG控制器-红点奖

产品介绍:

DPG 系列控制器中, DPGIM、DPG1B 和 DPG1C (曾获 2018 年红点设计大奖) 带有提醒功能, 通过灯光反映升降桌的当前使用状况。DPG 系列控制器可以通过倾斜激活简便地调整升降桌, 无需观看, 带有提醒功能的 DPG 桌面版车型号与升降桌控制 APP 兼容。用户可以设置最多四个记忆位置。

乐歌 **Loctek**[®]

Loctek

Loctek Electric Height Adjustable Standing Desk EHD105

Product style:
American style

Product introduction:

Height adjustable desks on the market always look similar?LoctekMotion contributes to creating an ergonomic workstation that provides both function and elegance to solve this problem. The drawer with gold knobs provides more capacity not typically seen in a traditional height adjustable desk.

乐歌电动升降桌 EHD105

产品风格:
美式风格

产品介绍:

市场上高度可调的办公桌总是看起来很相似?乐歌致力于打造一款兼具功能性和优雅性的,符合人体工学的工作站来解决这个问题。带有金色把手的抽屉提供了更多储存容量,这在传统高度可调的办公桌中是罕见的。



QUAMA[®] 冠美
办公家具 | 医养家具 | 酒店家具

QUAMA

Mingxuan

Product style:
Modern Concise

Product introduction:

The integration of modern lifestyle into Oriental Zen is the sublimation of modern aesthetics, and retains the cultural belonging of the Oriental precipitation. Modeling is simple, neat lines, highlighting the modern sense; Natural walnut grain texture is beautiful, color and luster is clear, create a high-level sense; The extension of aluminum decorative lines adds a sense of flexibility and layering, and the tone of the collected inside shows the atmosphere calmly.

明轩

设计风格:
现代简约

产品介绍:

将现代生活方式融入东方禅意即是现代美学的升华,又保留了东方人沉淀的文化归属感。造型方正简洁,线条利落,突出现代感;天然胡桃木纹理纹理优美,色泽清晰,营造高级感;铝装饰线条的延伸,增添了灵动与层次感,内敛的色调尽显大气从容。



Odette43 height-adjustable desk

Product style:
Modern, minimalist

Product introduction:

Odette43 is an electric height-adjustable desk, through the built-in linear motion system to realize the free adjustment of desk height, widely used in office and home. The adjustable height range of the adjustable desk is between 700-1150mm. When it comes to working environment, it allows a full range of healthy postures throughout the day and can contribute to worker wellbeing and productivity.

Odette43 小圆管升降系统

产品风格:
现代,极简风格

产品介绍:

ODETTE43 是一款符合人体工学的高度可调节的升降系统,通过内置的线性驱动系统搭配桌板来实现桌子的高度自由调节,创新型的极简设计风格适用于各种办公以及家居场景。升降系统的可调节高度范围在 700-1150MM 之间,可以调节至各种高度来匹配不同的人体姿势。



BEAR ONE

KOKO Screen + Office Sofa

Product style:
Modern style

Product introduction:

Germany imports Schat, IP finishing paper, through GB / T15102-2006 technical standard impregnated adhesive film paper finish; Guoyou Famous Brand Factory produces E1 class environmental protection decoration panel to ensure formaldehyde emission to safe level; Adopt professional mold seamless diamond aluminum alloy die-casting foot; Surface large surround electrostatic spray, equipped with PC + ABS (engineering plastic alloy) waterproof adjustment foot. Excellent heat and weather resistance, dimensional stability and impact resistance.

KOKO屏风+办公沙发

设计风格:
现代风格

产品介绍:

德国进口夏特、IP 饰面纸,通过 GB/T 15102-2006 技术标准浸渍胶膜纸饰面;国优名牌大厂生产 E1 级环保饰面板,确保甲醛排放达至安全水平;采用专业模具无缝菱形铝合金压铸脚;表面大型环绕静电喷塑,装有 PC+ABS(工程塑料合金)防水调节脚。具有优良耐热耐候性、尺寸稳定性和耐冲击性能。



Capri

Product style:
modern

Product introduction:

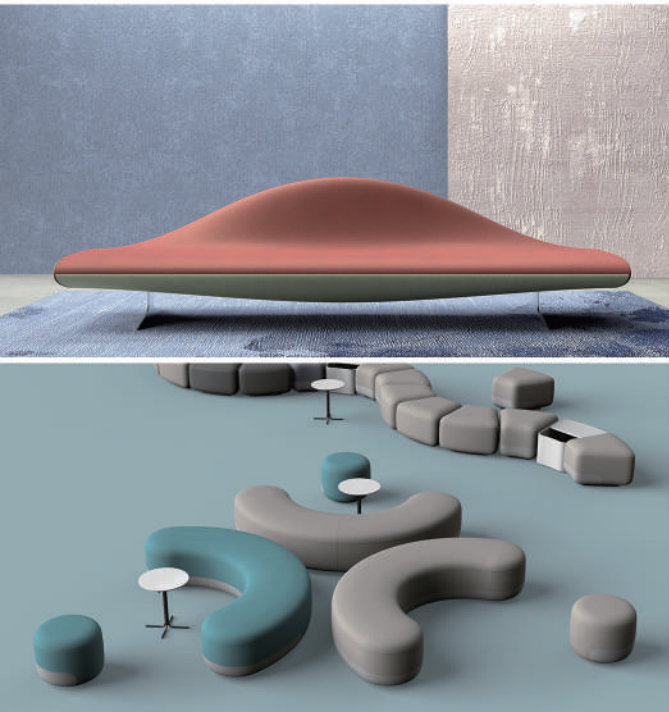
The design language as like as two peas, the slant, the round, and the infinite, can be combined and assembled. Then, by displaying, the individuals can be combined into C type and become S type, then O type, and then fit for different needs of different spaces. And the choice of color will be more abundant. Through the change of color, different atmosphere can be formed, bright, quiet, lively and warm, fully reflecting personal style.

云岚

产品风格:
现代

产品介绍:

云岚的设计语言,斜面的,圆润的,可以被无限拼接和组合的,然后通过陈列,把一个个一模一样的个体组合成C型,变成S型,变成O型,然后适合不同空间的不同需求。而且在色彩的选择上会更加丰富,通过色彩的变化可以形成不同的氛围,明快的,安静的,活泼的,热烈的,充分体现个人风格。



思尚

Asis Mercury Mesh Modern European Style Meeting Conference Guest Office Chair

MERCURY 低背会议椅

Product style:

Designed by the Italian Bartoli Design company, the worldwide famous studio.MERCURY chair can good match to the surrounding.

Product introduction:

MERCURY chair can good match to the surrounding.- Simple lines beautiful- Smoothly shape- Extraordinary brush aluminum alloy frameDesigned by the Italian Bartoli Design company, the worldwide famous studio.

产品风格:

迎合当下流行的简约风,简洁,线条明朗,容易配搭空间。

产品介绍:

MERCURY椅子可以很好地与周围环境相匹配。线条简洁优美,平滑的形状,超凡铝合金框架由全球知名工作室意大利BARTOLI DESIGN公司设计。

Ubl 优百丽

UBL

U-040

Product style:
Fashion,simplicity , popular

Product introduction:

High elastic wear-resistant meshHeadrest with lifting function.Backrest frame in black color which made of PA plus glass fiber.Fixed armrest in black color which made of PA plus glass fiber.The cushion is made of 40-density high-stretch sponge.One gear locked tilting mechanism with Tailgate.85#countersunk 50mm black paint gas cylinder.D340MM PA Five-star bases.Ø55mm PA wear-resistant Castor.

U-040

设计风格:
时尚,简约,大众

产品介绍:

高弹力耐磨网布头枕可上下调节黑色尼龙加玻纤背架黑色尼龙玻纤独立扶手座包采用 40 密度高弹力海绵带尾板蝴蝶底盘带原位锁定功能 85# 沉口 50MM 黑色烤漆气杆 340MM 尼龙五星脚Ø55MM 黑色耐磨尼龙轮。



优森纳
USENA

Usena

Solar

Product style:
Modern

Product introduction:

The product follows the principle of bionic design and conforms to the human waist structure design to make the chair back curve full and powerful, natural and comfortable, with an arc-shaped curve structure, increasing the contact surface between the chair body and the left and right sides of the body. No curve lines, no screws at the front side view of the chair, armrests are adapted to 3D for different needs, adopt a specific adjustable mechanism, and strengthen the support of the chair base to pass the BIFMA test. It is suitable for employee areas, conference rooms, training rooms, and multimedia conference rooms.

1902系列

设计风格:
现代

产品介绍:

产品追随仿生设计原理,符合人体腰骨结构设计使椅背曲线支撑饱满有力,自然舒适,呈弧形曲线结构,增大椅身与身体左右两侧接触面,全方位紧贴包裹背部,正视觉完美无无塑胶分模线,无螺丝,扶手适配3D 供不同需求,采用特定可调底盘,椅脚加强支撑通过 BIFMA 测试,适用于员工区域、会议室、培训室,多媒体会议室。



AOBIN/奥彬

Ergonomic Office Chair

Product style:
Modern Design

Product introduction:

1. molded foam backrest
2. Aluminium armrests
3. New wood grain water transfer process material
4. Multifunction mechanism
5. Aluminium base
6. Won Kapok design Awards China ,7. Passed the SGS international certificated

办公椅

产品风格:
现代时尚简约风格

产品介绍:

1. 定型棉靠背
2. 铝合金扶手
3. 新型木纹水转印工艺材料
4. 多功能锁定底盘
5. 铝合金五星脚
6. 获得红棉奖荣誉
7. 通过 SGS 国际认证标准。组合形态来满足多种办公需求



Sitzone®
精一家具

Sitzone

SHIELD

Product style:
Modern, fashion and Generous

Product introduction:

High-quality artificial leather or Brazilian imported first-layer cowhide veneer.Headrest with lifting function.High elasticity sponge.Aluminum alloy one-piece armrest with leather armrest surface.Equipped with cushion sliding function.3 Gear locked tilting mechanism.∅50 85#countersunk 4 cm electroplating gas cylinder.D350mm aluminum five-start bases.60/25 of anti-shock PU castor in black color.

希尔盾

设计风格:
现代、时尚、大气

产品介绍:

优质西皮或巴西进口头层黄牛皮饰面升降头枕高弹力海绵铝合金连体扶手,配皮扶手面配有坐垫滑动功能 3 档倾仰锁定底盘∅50 85# 沉 4 公分电镀汽杆 350MM 铝合金五星脚 60/25 防震黑色 PU 轮。



CStar CENTURY STAR

CENTURY STAR / 世纪星

CS03 leisure chair CS03 休闲椅

Product style: Modern
产品风格: 现代

Concept: Comfortable
设计理念: 舒适

Product introduction:
A new formula of reinforced PP + glass fiber is adopted

产品介绍:
采用增强型 PP+ 玻纤新型配方



ACOSMA®
KUSTAR INTERNATIONAL CO., LTD.

ACOSMA / 幼华

Howard

Product style: Modern
产品风格: 现代

Concept: Simple and easy to operate.
设计理念: 简单且容易操作

Product introduction:
Full leather - Office chair

产品介绍:
全牛皮办公室座椅, 用于主管员工皆合适

Functional advantages:
Used automatic mechanism without self-control.

功能优势:
自载重底盘, 无须人工调节



NANXING

**Panel dividing saw with lifting table
(Twin program fence & Twin pusher)**

Product style:
Woodworking machinery

Product introduction:
Panel dividing saw with lifting table(Twin program fence & twin pusher), is suitable for batch size one cutting and mass production cutting;Rear feeding twin pusher computer panel saw increase 40% efficiency compare to the normal rear feeding computer panel saw;Twin pusher and program fence to operate efficiently;Seamless joint with the design software, optimization software, MES(Optional), realize machining informatization.

**NPL380D 后上料高速电脑裁板锯
(双推手)**

产品风格:
木工机械

产品介绍:
双推手后上料电脑裁板锯,既能满足全屋定制单张锯切,也能适应批量板材多张叠切;双推手后上料比传统后上料提升 40% 的锯切效率;工夹横梁和推料横梁协同高效运行;与家具设计拆单软件、优化软件、MES(选配)等无缝对接,实现开料信息化。



KDT

**CNC drilling machine KD-612KS
(featured product)**

Product introduction:
6-side Drilling machine with double heads synchronous working double increase the drilling efficiency.

Functional advantages:
Dual-positioning Model leads to more accurate and higher efficient in drilling. Self-developed control software is available in Simulation of machining path, pre-calculation of machining time, Statistics of machining records, and real-time check on production progress to realize high efficient drilling.

数控钻孔中心KD-612KS

产品介绍:
双钻式六面数控钻孔中心,双钻包同步加工,效率倍增。

功能优势:
大小板件双定位模式,更准确高效;自主研发软件系统,模拟加工路径,预测加工时间,统计加工记录,实时查看生产进度,实现智能高效钻孔。

LIAN ROU
machinery

联柔机械

LIANROU

POCKET SPRING MACHINE LR-PS-DW160

Product introduction:

Produce pocket springs,one coiling head with 2 wires.Speed: 160 springs/min,conforming to ce standard

Functional advantages:

FASTER, EASIER TO OPERATE, MORE INTELLIGENT DESIGN

Concept:

Intelligence, Internet of things, digitization

袋装弹簧生产机LR-PS-DW160

产品介绍:

生产袋装弹簧, 1 个双线数控绕簧机头可实现弹簧条两种钢丝分区功能, 设备生产效率为一分钟 160 个弹簧, 设备符合 CE 标准。

功能优势:

速度更快, 操作更简单, 设计更智能化。

设计理念:

智能化, 物联网化, 数字化



HUAJIAN

SX-160DA DUAL WIRE POCKET SPRING MACHINE

Product style:

High-configuration

Product introduction:

1. Fabric correction system;
- 2.HMI inserted with intelligent caculation system
- 3.160 springs per min;
- 4.No baffle, reduce friction,belts with longer lifetime
- 5.High-configuration,40 magnetic suction blocks;

Functional advantages:

Intelligent,Stable

SX-160DA数控双钢丝袋装卷簧机

产品风格:

高配版

产品介绍:

1. 无纺布纠偏系统;
2. 人机界面内置智能弹簧成型系统
- 3.160 只每分钟;
4. 无挡板设计,减少皮带摩擦,延长皮带寿命;
5. 高配版,40 个磁铁吸块

功能优势:

智能,稳定





泰强化工
TAIQIANG CHEMICALS

Taijia

Two-component water-based glue

Product introduction:

It is used to bond sponge, wood, leather, imitation leather, cloth, foam and other materials.

Functional advantages:

Strong adhesion, high temperature resistance, aging resistance, long-lasting adhesion, high solid content, non-toxic and odorless, no electrostatic fire hazards, safety and environmental protection.

Concept:

Strong adhesion, high temperature resistance, aging resistance, long-lasting adhesion, high solid content, non-toxic and odorless, no electrostatic fire hazards, safety and environmental protection.

双组份水性胶

产品介绍:

应用于海绵、木材、真皮、仿皮、布料、泡沫等材料之间的粘合。

功能优势:

粘力强、耐高温、耐老化、粘力持久、固含量高、无毒无味、无静电起火隐患、安全环保。

设计理念:

粘力强、耐高温、耐老化、粘力持久、固含量高、无毒无味、无静电起火隐患、安全环保。



TAIJIA
TAIQIANG CHEMICALS

WATER BASED ADHESIVE NEW

ECO-FRIENDLY WATER BASED ADHESIVE

绿色环保·健康护航

泰佳

环保水性喷胶

AIR FLOW-SOFT™ 间隔织物 模拟微穿孔板吸声

织物表面摩擦产生音波，摩擦后声能转化为热能消散，孔径小于波长，声浪不易再传播。

测试设备: 英国物理声学公司PCI-2的声发射系统
测试方式: 匀速手压法-拍球10秒
测试平均值: 97.7dB / 45.5dB
40分贝以下人耳几乎听不到声音

静享睡眠

100%

最高声能转化效率

2

固定气孔数量

90%

降噪降噪

田野提花

声学设计

Acoustic design

声学设计: 清华大学
联合研制



田野提花
TIANYE JACQUARD

Field jacquard

AIR FLOW-SOFT 间隔织物

Product style: Fashion Technology

产品风格: 时尚 科技

Product introduction:

The surface friction of mute noise reduction fabric produces sound wave, and the sound energy is converted into heat energy after friction. The aperture is smaller than the wavelength, and the sound is not easy to propagate again.

产品介绍:

静音 降噪 织物表面摩擦产生音波，摩擦后声能转化为热能，孔径小于波长声音不易再传播。

Concept: Quiet sleep

设计理念: 静享睡眠

KAPOK 红棉花

Kapok

Padova Oak

Product style:
Italy light luxury, modern simplicity

Product introduction:
The laminated panel is originated from selected log material. Selected log material, suitable surface technology treatment. The partial design is converted into digital data by scanner and then printed out by plotter. After scanning, print out the partial design, manually arrange the layout to achieve a coordinated result, and complete the typesetting through digital. Through the whole control system, the deviation between the expansion of wood grain texture and synchronous steel plate is about 1mm, presenting exquisite and delicate light and shadow effect.

帕多瓦橡木

产品风格:
意大利轻奢、现代简约

产品介绍:
精选原木材料,进行合适的表面技术处理。将局部设计由扫描仪转化成数字资料,再由绘图机打印出来。扫描之后打印出局部设计,手工编排布局,达到协调的结果,通过数字化完成排版。通过整套控制系统,最大限度的保证木纹纹理的膨胀与同步钢板偏差在1MM左右,呈现精美细腻的光影效果。



JUSEN 炬森

Jusen



One Touch

Product style:
modern

Product introduction:
The One Touch automatic door opener is uniquely created by Jusen and has an invention patent. The overall style is simple and conforms to the current mainstream style of light luxury and simplicity. The Jusen OT automatic door opener is suitable for 95% of the cabinet connection designs on the market and has a wide range of applications. It can be matched with a variety of hinges, and can be applied to various scenes such as cloakroom, living room, kitchen, bathroom and so on.

One Touch自动开门器

产品风格:
现代

产品介绍:
ONE TOUCH 自动开门器为炬森独创,拥有发明专利,整体风格简洁,符合当下轻奢简约的家居主流风格,炬森 OT 自动开门器适用于市场上 95% 的柜体连接设计,适用范围广泛,可与多种铰链搭配,适用于衣帽间、客厅、厨房、卫浴间等多种场景。

KEA祥兴

KEA

Any-Click System:3D Clip-on Soft-closing Hinge (Two-way)

三向卡式三维调节内置阻尼铰链 (二段力)

Product style:
modern

产品风格:
现代

Product introduction:
material: Iron with nickel plating; function: Damper
switch, Three way quick installation of base, Mini
soft-closing damper.

产品介绍:
材质: 铁镀镍; 功能: 缓冲功能开关,
底座三向卡式快装, 迷你型内置阻尼
器。

